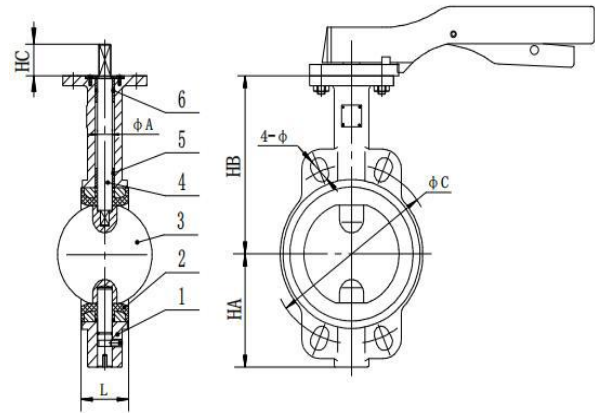


OK-701-HANDLE



OK VALVE®
宏邦阀门

NO.	PART	Choose	QTY
1	BODY	CI/DI	1
2	SEAT	EPDM/NBR/VITON/PTFE	1
3	DISC	DI+NP/CF8/CF8M/AL-B	1
4	STEM	416/431/304/316/17-4PH	2
5	BUSHING	PTFE/BRASS	5
6	O-RING	NBR	3
7	LEVER	CAST/ALUMINUM	1
TEST PRESSURE		SHELL	SEAL
	HYDROSTATIC	2.4 MPa	1.76 MPa
STANDARD	DESIGN CODE	API 609/EN 593	
	INSPECTION & TEST	API 598/EN 12266	
	END STANDARD	PN10/16 150LB 10K	
	FACE TO FACE	API 609/EN 558	



GENERAL CHARACTERISTICS

Design according with API 609/EN 593
Tightness in both ways. Lug type with threaded ears
Flexible sleeve adapted to the shape of the body assures low operating torque. High and low semi stem giving a high flow coefficient, machined disc on periphery giving a low and regular torque. Unejectable stem, mounting flange according to ISO 5211.



STANDARDS

Manufacture according to the requirements of the European directive 2014/68/EU «Equipment under pressure»: modulate H. Face to face according to standards NF EN 558 serie 20, ISO 5752 série 20, DIN 3202.

Mounting with flanges PN10/PN16/150LB/10K from DN50 to DN600 from DN200 to DN300 according to API 609/EN 1092-2.

Pressure test according to standards API 609/EN 12266-1, DIN 3230, BS 6755 and ISO 5208

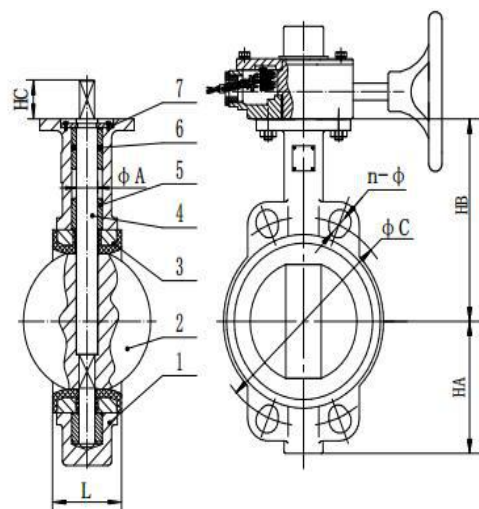
Size	H1	H2	L	HC	φ C
2"/DN50	66	130	43	32	PN10/16 150LB 10K
2-1/2"/DN65	75	140	46	32	PN10/16 150LB 10K
3"/DN80	95	150	46	32	PN10/16 150LB 10K
4"/DN100	105	170	52	32	PN10/16 150LB 10K
5"/DN125	122	180	56	32	PN10/16 150LB 10K
6"/DN150	134	205	56	32	PN10/16 150LB 10K
8"/DN200	168	235	60	36	PN10/16 150LB 10K

OK-712-SIGNAL



OK VALVE®
宏邦阀门

NO.	PART	Choose	QTY
1	BODY	CI/DI	1
2	SEAT	EPDM/NBR/VITON/PTFE	1
3	DISC	DI+NP/CF8/CF8M/AL-B	1
4	STEM	416/431/304/316/17-4PH	2
5	BUSHING	PTFE/BRASS	5
6	O-RING	NBR	3
7	GEAR	SIGNAL GEAR BOX	1
TEST PRESSURE		SHELL	SEAL
		HYDROSTATIC 2.4 MPa	1.76 MPa
STANDARD	DESIGN CODE	API 609/EN 593	
	INSPECTION & TEST	API 598/EN 12266	
	END STANDARD	PN10/16 150LB 10K	
	FACE TO FACE	API 609/EN 558	



GENERAL CHARACTERISTICS

Design according with API 609/EN 593

Tightness in both ways. Lug type with threaded ears

Flexible sleeve adapted to the shape of the body assures low operating torque. High and low semi stem giving a high flow coefficient, machined disc on periphery giving a low and regular torque. Unejectable stem, mounting flange according to ISO 5211.



STANDARDS

Manufacture according to the requirements of the European directive 2014/68/EU «Equipment under pressure»: modulate H. Face to face according to standards NF EN 558 serie 20, ISO 5752 série 20, DIN 3202.

Mounting with flanges PN10/PN16/150LB/10K from DN50 to DN600 from DN200 to DN300 according to API 609/EN 1092-2.

Pressure test according to standards API 609/EN 12266-1, DIN 3230, BS 6755 and ISO 5208

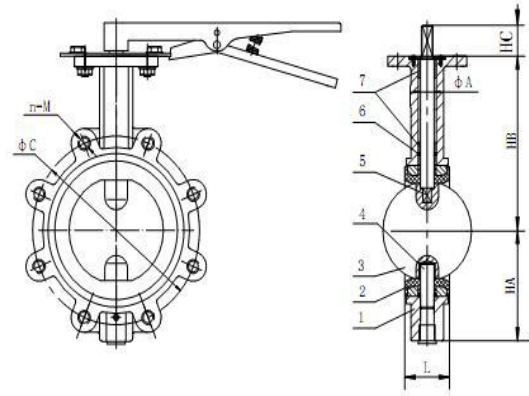
Size	H1	H2	L	HC	φ C
2"/DN50	66	130	43	32	PN10/16 150LB 10K
2-1/2"/DN65	75	140	46	32	PN10/16 150LB 10K
3"/DN80	95	150	46	32	PN10/16 150LB 10K
4"/DN100	105	170	52	32	PN10/16 150LB 10K
5"/DN125	122	180	56	32	PN10/16 150LB 10K
6"/DN150	134	205	56	32	PN10/16 150LB 10K
8"/DN200	168	235	60	36	PN10/16 150LB 10K

OK-801-HANDLE



OK VALVE®
宏邦阀门

NO.	PART	Choose	QTY
1	BODY	CI/DI	1
2	SEAT	EPDM/NBR/VITON/PTFE	1
3	DISC	DI+NP/CF8/CF8M/AL-B	1
4	STEM	416/431/304/316/17-4PH	2
5	BUSHING	PTFE/BRASS	5
6	O-RING	NBR	3
7	LEVER	CAST/ALUMINUM	1
TEST PRESSURE		SHELL	SEAL
		HYDROSTATIC 2.4 MPa	1.76 MPa
STANDARD	DESIGN CODE	API 609/EN 593	
	INSPECTION & TEST	API 598/EN 12266	
	END STANDARD	PN10/16 150LB 10K	
	FACE TO FACE	API 609/EN 558	



GENERAL CHARACTERISTICS

Design according with API 609/EN 593

Tightness in both ways. Lug type with threaded ears

Flexible sleeve adapted to the shape of the body assures low operating torque. High and low semi stem giving a high flow coefficient, machined disc on periphery giving a low and regular torque. Unejectable stem, mounting flange according to ISO 5211.

STANDARDS

Manufacture according to the requirements of the European directive 2014/68/EU «Equipment under pressure»: modulate H. Face to face according to standards NF EN 558 serie 20, ISO 5752 série 20, DIN 3202.

Mounting with flanges PN10/PN16/150LB/10K from DN50 to DN600 from DN200 to DN300 according to API 609/EN 1092-2.

Pressure test according to standards API 609/EN 12266-1, DIN 3230, BS 6755 and ISO 5208



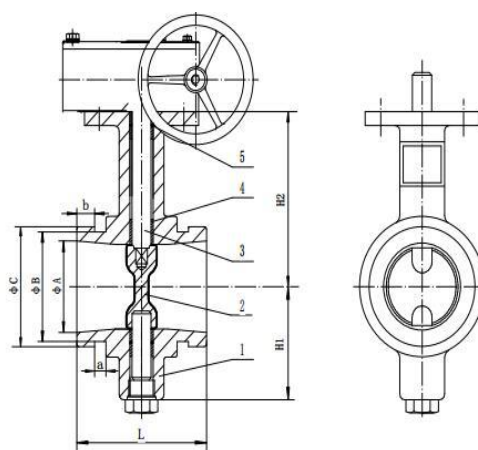
Size	H1	H2	L	HC	φ C
2"/DN50	66	130	43	32	PN10/16 150LB 10K
2-1/2"/DN65	75	140	46	32	PN10/16 150LB 10K
3"/DN80	95	150	46	32	PN10/16 150LB 10K
4"/DN100	105	170	52	32	PN10/16 150LB 10K
5"/DN125	122	180	56	32	PN10/16 150LB 10K
6"/DN150	134	205	56	32	PN10/16 150LB 10K
8"/DN200	168	235	60	36	PN10/16 150LB 10K

OK-711-SIGNAL



OK VALVE®
宏邦阀门

NO.	PART	Choose	QTY
1	BODY	DI	1
2	SEAT	DI	1
3	DISC	DI+EPDM	1
4	STEM	416	2
5	BUSHING	PTFE	5
6	O-RING	NBR	3
7	GEAR	SIGNAL GEAR BOX	1
TEST PRESSURE		SHELL	SEAL
		HYDROSTATIC 2.4 MPa	1.76 MPa
STANDARD	DESIGN CODE	API 609/EN 593	
	INSPECTION & TEST	API 598/EN 12266	
	END STANDARD	PN16 150LB	
	FACE TO FACE	API 609/EN 558	



GENERAL CHARACTERISTICS

Design according with API 609/EN 593

Tightness in both ways. Lug type with threaded ears

Flexible sleeve adapted to the shape of the body assures low operating torque. High and low semi stem giving a high flow coefficient, machined disc on periphery giving a low and regular torque. Unejectable stem, mounting flange according to ISO 5211.

STANDARDS

Manufacture according to the requirements of the European directive 2014/68/EU «Equipment under pressure»: modulate H. Face to face according to standards NF EN 558 serie 20, ISO 5752 série 20, DIN 3202.

Mounting with flanges PN16/150LB from DN50 to DN600 from DN200 to DN300 according to API 609/EN 1092-2.

Pressure test according to standards API 609/EN 12266-1, DIN 3230, BS 6755 and ISO 5208



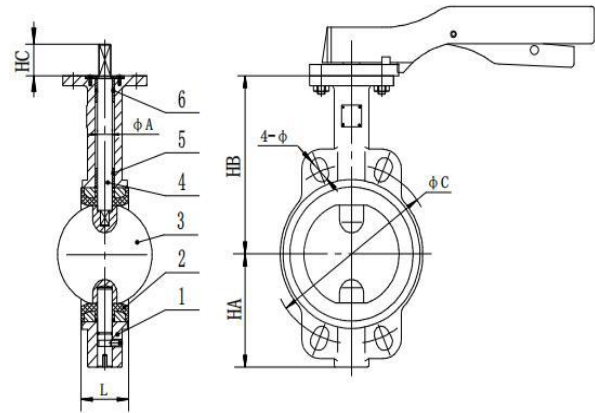
Size	H1	H2	L	φ A	φ C
2"/DN50	70	100	82.4	50	PN16 150LB
2-1/2"/DN65	75	106	96.8	61	PN16 150LB
3"/DN80	82	113	96.8	80	PN16 150LB
4"/DN100	100	135	115.8	101	PN16 150LB
5"/DN125					
6"/DN150	130	176	147.6	150	PN16 150LB
8"/DN200	162	204	133.4	202	PN16 150LB

OK-702-HANDLE



OK VALVE®
宏邦阀门

NO.	PART	Choose	QTY
1	BODY	CF8/CF8M	1
2	SEAT	EPDM/NBR/VITON/PTFE	1
3	DISC	CF8/CF8M	1
4	STEM	416/431/304/316/17-4PH	2
5	BUSHING	PTFE/BRASS	5
6	O-RING	NBR	3
7	LEVER	SS304/SS316	1
TEST PRESSURE		SHELL	SEAL
	HYDROSTATIC	2.4 MPa	1.76 MPa
STANDARD	DESIGN CODE	API 609/EN 593	
	INSPECTION & TEST	API 598/EN 12266	
	END STANDARD	PN10/16 150LB 10K	
	FACE TO FACE	API 609/EN 558	



GENERAL CHARACTERISTICS

Design according with API 609/EN 593

Tightness in both ways. Lug type with threaded ears

Flexible sleeve adapted to the shape of the body assures low operating torque. High and low semi stem giving a high flow coefficient, machined disc on periphery giving a low and regular torque. Unejectable stem, mounting flange according to ISO 5211.

STANDARDS

Manufacture according to the requirements of the European directive 2014/68/EU «Equipment under pressure»: modulate H. Face to face according to standards NF EN 558 serie 20, ISO 5752 série 20, DIN 3202.

Mounting with flanges PN10/PN16/150LB/10K from DN50 to DN600 from DN200 to DN300 according to API 609/EN 1092-2.

Pressure test according to standards API 609/EN 12266-1, DIN 3230, BS 6755 and ISO 5208



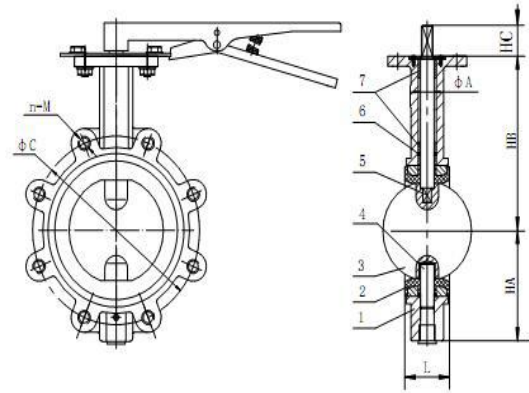
Size	H1	H2	L	HC	φ C
2"/DN50	66	130	43	32	PN10/16 150LB 10K
2-1/2"/DN65	75	140	46	32	PN10/16 150LB 10K
3"/DN80	95	150	46	32	PN10/16 150LB 10K
4"/DN100	105	170	52	32	PN10/16 150LB 10K
5"/DN125	122	180	56	32	PN10/16 150LB 10K
6"/DN150	134	205	56	32	PN10/16 150LB 10K
8"/DN200	168	235	60	36	PN10/16 150LB 10K

OK-802-HANDLE



OK VALVE®
宏邦阀门

NO.	PART	Choose	QTY
1	BODY	CF8/CF8M	1
2	SEAT	EPDM/NBR/VITON/PTFE	1
3	DISC	CF8/CF8M	1
4	STEM	416/431/304/316/17-4PH	2
5	BUSHING	PTFE/BRASS	5
6	O-RING	NBR	3
7	LEVER	SS304/SS316	1
TEST PRESSURE		SHELL	SEAL
	HYDROSTATIC	2.4 MPa	1.76 MPa
STANDARD	DESIGN CODE	API 609/EN 593	
	INSPECTION & TEST	API 598/EN 12266	
	END STANDARD	PN10/16 150LB 10K	
	FACE TO FACE	API 609/EN 558	



GENERAL CHARACTERISTICS

Design according with API 609/EN 593

Tightness in both ways. Lug type with threaded ears

Flexible sleeve adapted to the shape of the body assures low operating torque. High and low semi stem giving a high flow coefficient, machined disc on periphery giving a low and regular torque. Unejectable stem, mounting flange according to ISO 5211.

STANDARDS

Manufacture according to the requirements of the European directive 2014/68/EU «Equipment under pressure»: modulate H. Face to face according to standards NF EN 558 serie 20, ISO 5752 série 20, DIN 3202.

Mounting with flanges PN10/PN16/150LB/10K from DN50 to DN600 from DN200 to DN300 according to API 609/EN 1092-2.

Pressure test according to standards API 609/EN 12266-1, DIN 3230, BS 6755 and ISO 5208



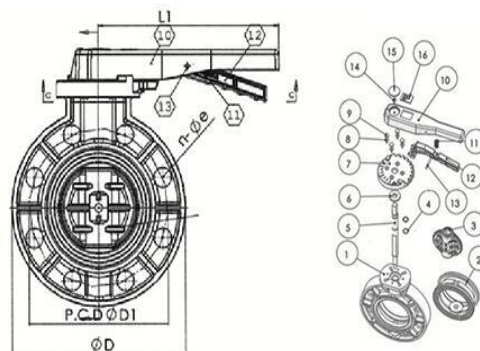
Size	H1	H2	L	HC	φ C
2"/DN50	66	130	43	32	PN10/16 150LB 10K
2-1/2"/DN65	75	140	46	32	PN10/16 150LB 10K
3"/DN80	95	150	46	32	PN10/16 150LB 10K
4"/DN100	105	170	52	32	PN10/16 150LB 10K
5"/DN125	122	180	56	32	PN10/16 150LB 10K
6"/DN150	134	205	56	32	PN10/16 150LB 10K
8"/DN200	168	235	60	36	PN10/16 150LB 10K

OK-611-UPVC



OK VALVE®
宏邦阀门

NO.	PART	Choose	QTY
1	BODY	PVC/CPVC/PP/FRPP	1
2	SEAT	EPDM	1
3	DISC	PVC/CPVC/PP/FRPP	1
4	STEM	SS416/SS304/SS316	2
5	BUSHING	PTFE	5
6	O-RING	EPDM/VITON	3
7	LEVER	PVC	1
TEST PRESSURE		SHELL	SEAL
	HYDROSTATIC	2.4 MPa	1.76 MPa
STANDARD	DESIGN CODE	API 609/EN 593	
	INSPECTION & TEST	API 598/EN 12266	
	END STANDARD	PN16 150LB	
	FACE TO FACE	API 609/EN 558	



GENERAL CHARACTERISTICS

Design according with API 609/EN 593

Tightness in both ways. Lug type with threaded ears

Flexible sleeve adapted to the shape of the body assures low operating torque. High and low semi stem giving a high flow coefficient, machined disc on periphery giving a low and regular torque. Unejectable stem, mounting flange according to ISO 5211.



STANDARDS

Manufacture according to the requirements of the European directive 2014/68/EU «Equipment under pressure»: modulate H. Face to face according to standards NF EN 558 serie 20, ISO 5752 série 20, DIN 3202.

Mounting with flanges PN16/150LB from DN50 to DN600 from DN200 to DN300 according to API 609/EN 1092-2.

Pressure test according to standards API 609/EN 12266-1, DIN 3230, BS 6755 and ISO 5208

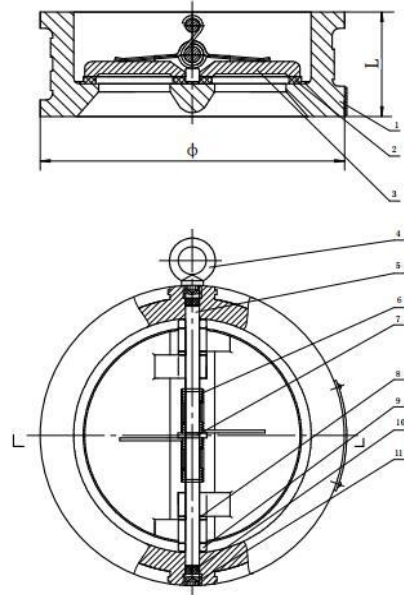
Size	H1	H2	L	n-φ	φ C
2"/DN50	100	120	43	4-19	PN10/16 150LB 10K
2-1/2"/DN65	110	137	46	4-19	PN10/16 150LB 10K
3"/DN80	132	143	49	8-19	PN10/16 150LB 10K
4"/DN100	155	162	54	8-19	PN10/16 150LB 10K
5"/DN125	167	195	64	8-19	PN10/16 150LB 10K
6"/DN150	180	208	70	8-23	PN10/16 150LB 10K
8"/DN200	225	240	88	8-23	PN10/16 150LB 10K

OK-501-CAST IRON



OK VALVE®
宏邦阀门

NO.	PART	Choose	QTY
1	BODY	CI/DI	1
2	SEAT	EPDM/NBR/VITON	1
3	DISC	DI+NP/CF8/CF8M/AL-B	2
4	EYE BOLT	SS304/SS316	1
5	SHAFT	SS304/SS316	2
6	SPRING	SS304/SS316	4
7	GASKET	F4	1
8	GASKET	F4	1
9	GASKET	F4	2
10	BUSH	F4	2
11	SCREW	SS304/SS316	4
TEST PRESSURE		SHELL	SEAL
	HYDROSTATIC	2.4 MPa	1.76 MPa
STANDARD	DESIGN CODE	API 609/EN 593	
	INSPECTION & TEST	API 598/EN 12266	
	END STANDARD	PN10/16 150LB 10K	
	FACE TO FACE	API 609/EN 558	



GENERAL CHARACTERISTICS

Design in accordance with standard API609/EN 16767.

Range: From DN 40 to DN 600.

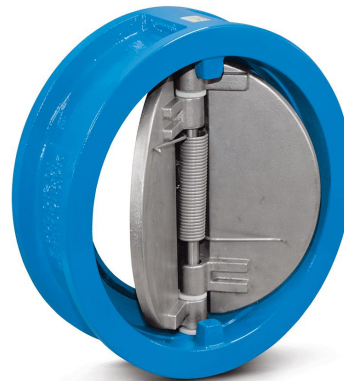
Mounting between flanges.

Working positions: horizontal and vertical ascending, and vertical descending position < DN 150.

Mounting in accordance with many standards connections.

Low head loss.

Stainless steel spring technology to avoid fluid hammer.



STANDARDS

Manufacture according to the requirements of the European directive 2014/68/EU «Equipment under pressure»:

category III modulate H.

Face to face according to standard API609/EN 558-1 serie 16.

Mounting with flanges PN10/PN16/150LB/10K from DN50 to DN600

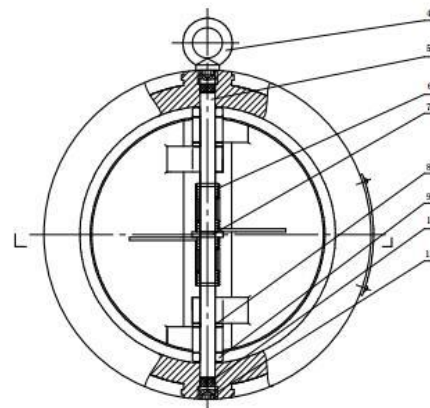
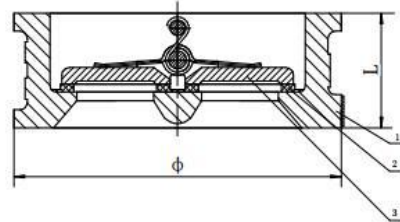
Size	PN10/16		125LB		φ C
	L	φ C	L	φ C	
2"/DN50					PN10/16 125LB 10K
2-1/2"/DN65					PN10/16 125LB 10K
3"/DN80					PN10/16 125LB 10K
4"/DN100					PN10/16 125LB 10K
5"/DN125					PN10/16 125LB 10K
6"/DN150					PN10/16 125LB 10K
8"/DN200					PN10/16 125LB 10K

OK-502-STAINLESS



OK VALVE®
宏邦阀门

NO.	PART	Choose	QTY
1	BODY	CF8/CF8M	1
2	SEAT	EPDM/NBR/VITON	1
3	DISC	CF8/CF8M	2
4	EYE BOLT	SS304/SS316	1
5	SHAFT	SS304/SS316	2
6	SPRING	SS304/SS316	4
7	GASKET	F4	1
8	GASKET	F4	1
9	GASKET	F4	2
10	BUSH	F4	2
11	SCREW	SS304/SS316	4
TEST PRESSURE		SHELL	SEAL
	HYDROSTATIC	2.4 MPa	1.76 MPa
STANDARD	DESIGN CODE	API 609/EN 593	
	INSPECTION & TEST	API 598/EN 12266	
	END STANDARD	PN10/16 150LB 10K	
	FACE TO FACE	API 609/EN 558	



GENERAL CHARACTERISTICS

Design in accordance with standard API609/EN 16767.

Range: From DN 40 to DN 600.

Mounting between flanges.

Working positions: horizontal and vertical ascending, and vertical descending position < DN 150.

Mounting in accordance with many standards connections.

Low head loss.

Stainless steel spring technology to avoid fluid hammer.

STANDARDS

Manufacture according to the requirements of the European directive 2014/68/EU «Equipment under pressure»:

category III modulate H.

Face to face according to standard API609/EN 558-1 serie 16.

Mounting with flanges PN10/PN16/150LB/10K from DN50 to DN600



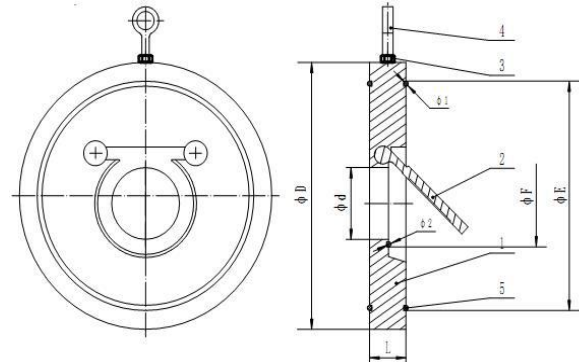
Size	PN10/16		125LB		φ C
	L	φ C	L	φ C	
2"/DN50					PN10/16 125LB 10K
2-1/2"/DN65					PN10/16 125LB 10K
3"/DN80					PN10/16 125LB 10K
4"/DN100					PN10/16 125LB 10K
5"/DN125					PN10/16 125LB 10K
6"/DN150					PN10/16 125LB 10K
8"/DN200					PN10/16 125LB 10K

OK-503-STAINLESS



OK VALVE®
宏邦阀门

NO.	PART	Choose	QTY
1	BODY	CF8/CF8M	1
2	DISC	CF8/CF8M	1
3	NUT	SS304/SS316	1
4	BOLT	SS304/SS316	3
5	O-RING	EPDM/NBR/VITON	3
TEST PRESSURE		SHELL	SEAL
	HYDROSTATIC	2.4 MPa	1.76 MPa
STANDARD	DESIGN CODE	API 609/EN 593	
	INSPECTION & TEST	API 598/EN 12266	
	END STANDARD	PN10/16 150LB 10K	
	FACE TO FACE	API 609/EN 558	



GENERAL CHARACTERISTICS

Design in accordance with standard NF EN 14341.

Range: From DN 40 to DN 600.

Mounting and working position in horizontal and vertical ascending fluid.

Short length.

Easy mounting.

Low weight.

Low head loss.

Seat inside body.



STANDARDS

Face to face according to standard E 29-377 tab 2 serie FR, except DN 200 : serie FR variant ISO PN 16.

Mounting between flanges PN 16.

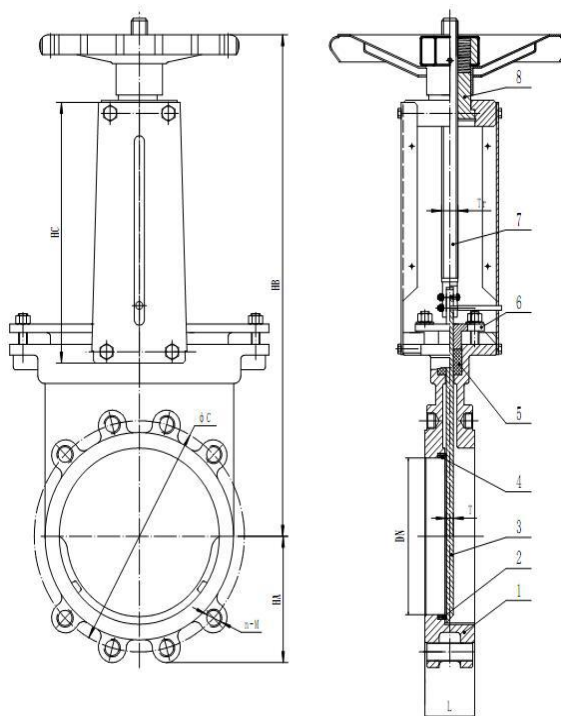
Size	PN10/16		125LB		φ C
	L	φ C	L	φ C	
2"/DN50					PN10/16 125LB 10K
2-1/2"/DN65					PN10/16 125LB 10K
3"/DN80					PN10/16 125LB 10K
4"/DN100					PN10/16 125LB 10K
5"/DN125					PN10/16 125LB 10K
6"/DN150					PN10/16 125LB 10K
8"/DN200					PN10/16 125LB 10K

OK-202-HANDWHEEL



OK VALVE®
宏邦阀门

NO.	PART	Choose	QTY
1	BODY	GGG40	1
2	SEAT	EPDM/NBR	1
3	GATE	SS304/SS316	1
4	RETAINER	SS304/SS316	2
5	O-RING	NBR	5
6	GLAND	GGG40	3
7	STEM	SS304/SS316	1
8	LOCK NUT	BRASS	
TEST PRESSURE		HYDROSTATIC	
		SHELL	1.5 MPa
		SEAL	1.1 MPa
STANDARD	DESIGN CODE	EN 593	
	INSPECTION & TEST	EN 12266	
	END STANDARD	PN10	
	FACE TO FACE	EN 558	



GENERAL CHARACTERISTICS

Range : from DN 50 to DN 600.

Function ON/OFF or regulation.

Wafer threaded mounting ISO PN10.

Unidirectional tightness, direction indication thanks to the arrow on the body.

Small retention zone: the gate is guided in the body and has little clearance.

Gland assembly: packing and O-ring (same materials as seat joint) to assure the elasticity and decrease the operating torque. Small head loss. Possibility to regulate thick fluids with the adaptation of a diaphragm ring.

STANDARDS

Manufacture according to the requirements of the European directive 2014/68/UE «Equipments under pressure» : modulate H.

On request : Product in accordance to european directive

"Potentially explosive atmospheres" N° 94/9/EC :

ATEX II 2 GD c and ATEX II 3 GD c.

Test procedures are established according to standards EN 12266-1, DIN 3230, BS 5154 and ISO 5208.



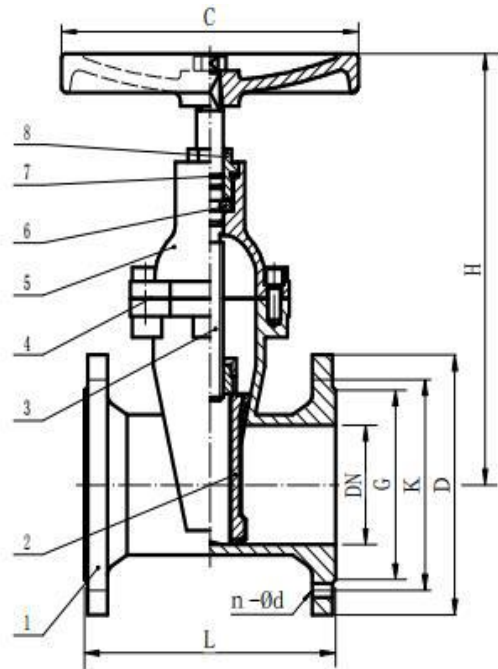
Size	HA	HB	HC	HC	φ C
2"/DN50	65	289	153	43	PN10
2-1/2"/DN65	70	313	172	46	PN10
3"/DN80	95	335	182	46	PN10
4"/DN100	108	380	215	52	PN10
5"/DN125	124	415	235	56	PN10
6"/DN150	135	470	260	56	PN10
8"/DN200	165	580	325	60	PN10

OK-203-HANDWHEEL



OK VALVE®
宏邦阀门

NO.	PART	Choose	QTY
1	BODY	GGG50	1
2	WEDGE	GG50+EPDM	1
3	STEM	SS416	1
4	GASKET	EPDM	2
5	BONNET	DI	5
6	LOCATING	BRASS	3
7	O-RING	EPDM	1
8	NUT	BRASS	
TEST PRESSURE		HYDROSTATIC	SHELL 2.4 MPa SEAL 1.76 MPa
STANDARD	DESIGN CODE	EN 593	
	INSPECTION & TEST	EN 12266	
	END STANDARD	PN10/16	
	FACE TO FACE	EN 558	



GENERAL CHARACTERISTICS

- Full and total bore
- Stainless steel non rising stem
- Clockwise to close
- Ductile iron wedge EPDM coated
- No retention area
- Heel positioning
- EPDM bonnet gasket
- Screws bonnet protected
- 3 EPDM O ring on stem
- Possibility to change stem gasket under pressure
- Epoxy painting RAL 5015 color 250 µm thickness
- Dust-coat on stem
- ISO PN10/16.



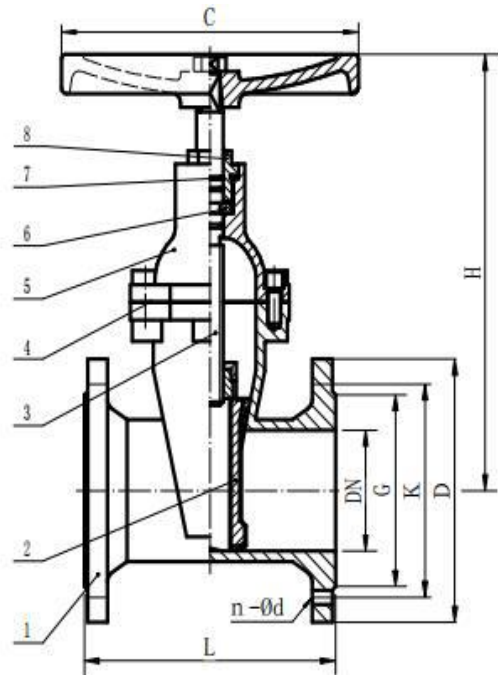
Size	H	C	D	L	φ C
2"/DN50	230	180	165	150	PN10/16
2-1/2"/DN65	265	180	185	170	PN10/16
3"/DN80	265	220	200	180	PN10/16
4"/DN100	310	240	220	190	PN10/16
5"/DN125	390	260	250	200	PN10/16
6"/DN150	390	260	285	210	PN10/16
8"/DN200	425	280	340	230	PN10/16

OK-204-HANDWHEEL



OK VALVE®
宏邦阀门

NO.	PART	Choose	QTY
1	BODY	GGG50	1
2	WEDGE	GG50+EPDM	1
3	STEM	SS416	1
4	GASKET	EPDM	2
5	BONNET	DI	5
6	LOCATING	BRASS	3
7	O-RING	EPDM	1
8	NUT	BRASS	
TEST PRESSURE		HYDROSTATIC	SHELL 2.4 MPa SEAL 1.76 MPa
STANDARD	DESIGN CODE	EN 593	
	INSPECTION & TEST	EN 12266	
	END STANDARD	PN10/16	
	FACE TO FACE	EN 558	



GENERAL CHARACTERISTICS

- Full and total bore
- Stainless steel non rising stem
- Clockwise to close
- Ductile iron wedge EPDM coated
- No retention area
- Heel positioning
- EPDM bonnet gasket
- Screws bonnet protected
- 3 EPDM O ring on stem
- Possibility to change stem gasket under pressure
- Epoxy painting RAL 5015 color 250 µm thickness
- Dust-coat on stem
- ISO PN10/16.



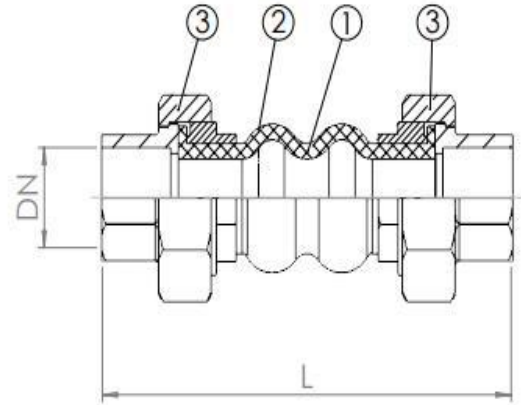
Size	H	C	D	L	φ C
2"/DN50	300	180	165	250	PN10/16
2-1/2"/DN65	345	180	185	270	PN10/16
3"/DN80	390	220	200	280	PN10/16
4"/DN100	430	240	220	300	PN10/16
5"/DN125	510	260	250	325	PN10/16
6"/DN150	565	260	285	350	PN10/16
8"/DN200	680	280	340	400	PN10/16

OK-305-JOINT



OK VALVE®
宏邦阀门

NO.	PART	Choose	QTY
1	BELLOW	EPDM /NBR	1
2	REINFORCEMENT	NYLONG TYRE CORD	1
3	UNION	MALLEABLE	2
TEST PRESSURE		SHELL	SEAL
	HYDROSTATIC	2.4 MPa	2.4 MPa
STANDARD	DESIGN CODE	EN 593	
	INSPECTION & TEST	EN 12266	
	END STANDARD	PN10/16	
	FACE TO FACE	EN 558	



GENERAL CHARACTERISTICS

Female cast iron 3 pieces BSPT threaded union ends.

Movement :

- Axial compression,
- Axial extension,
- Lateral movement.

STANDARDS

BSPT female threaded according to standard ISO 228-1.



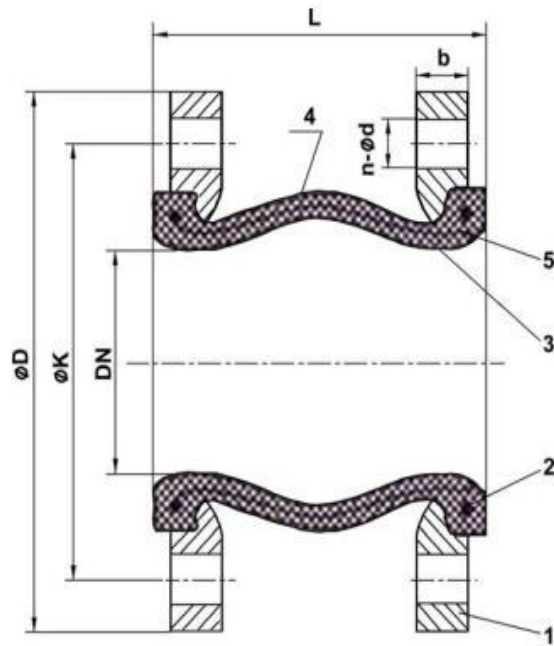
Size	L	Le	Lc	LI	A°
DN15	200	6	22	22	20°
DN20	200	6	22	22	20°
DN25	200	6	22	22	20°
DN32	200	6	22	22	20°
DN40	200	6	22	22	20°
DN50	220	6	22	22	20°

OK-303-JOINT



OK VALVE®
宏邦阀门

NO.	PART	Choose	QTY
1	FLANGE	Zinc plated steel	2
2	Reinforced wire	Steel	2
3	Internal bellow	EPDM /NBR	1
4	External bellow	EPDM /NBR	1
5	Reinforcement	Nylon tyre cord	1
TEST PRESSURE		SHELL	SEAL
	HYDROSTATIC	2.4 MPa	1.76 MPa
STANDARD	DESIGN CODE	EN 593	
	INSPECTION & TEST	EN 12266	
	END STANDARD	PN10/16	
	FACE TO FACE	EN 558	



GENERAL CHARACTERISTICS

EPDM/NBR rubber bellows.

Zinc-plated steel flanges drilled ends - PN16.

Movement :

- Axial compression,
- Axial extension,
- Lateral movement.

STANDARDS

Pressure test according to standards

EN 12266-1, DIN 3230, BS 6755 and ISO 5208.

Flanges drilled according to ISO PN16 EN 1092-1.



Size	L	φ D	φ K	b	n-φ d
2"/DN50	130	165	125	15	PN10/16
2-1/2"/DN65	130	185	145	15	PN10/16
3"/DN80	130	200	160	17	PN10/16
4"/DN100	130	220	180	17	PN10/16
5"/DN125	130	250	210	19	PN10/16
6"/DN150	130	285	240	21	PN10/16
8"/DN200	130	340	295	21	PN10/16